

TECH NOTE:

Crossover Guide - GSX to GTX

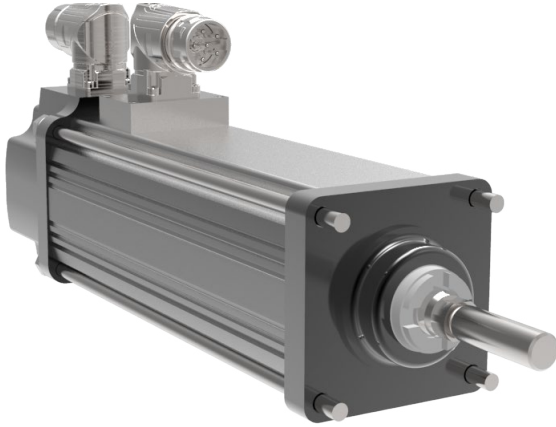
**TECH
NOTE**

PUBLISHED | 12.19.23

***CURTISS -
WRIGHT***

EXLAR[®]

Exlar[®] actuators are a brand of Curtiss-Wright Actuation Division



Frame Size		
GSX20	→	GTX060
GSX30		GTX080
GSX40		GTX100

Stroke Range Availability		
GSX	→	GTX
(20) 3in -12in		(060) 80mm -300mm
(30) 3in -18in		(080) 100mm - 450mm
(40) 4in - 18in		(100) 150mm - 300mm

Lead		
(01,02,04) GSX20	→	(01,02,04) GTX060
(01,02,05) GSX30		(01,02,05) GTX080
(01,02,05,08) GSX40		(01,02,05) GTX100

* Configured stroke options available in 25mm increments on GTX products

Winding Voltage				
GSX	Stacks	→	GTX	3 Stack Std.
GSX20	1, 2, 3		GTX060	(4) AC, (D) DC
GSX30	1, 2, 3		GTX080	(4) AC, (D) DC
GSX40	1, 2, 3		GTX100	(4) AC

Rod Thread		
GSX	→	GTX
(A) Male Metric		(A) Male Metric
(B) Female Metric		(B) Female Metric
(M) Male Inch		(M) Male Inch
(F) Female Inch		(F) Female Inch

*Internal anti-rotate splined rod option available on GTX products

Feedback Options				
Drive Manufacturer	Feedback Type	GSX		GTX
Advanced Motion Control	Standard Incremental Encoder	AM1		N/A
	Encoder, 1000 line	AM2		N/A
	Standard Resolver	AM3		N/A
	Encoder, 5000 line	AM5		N/A
B&R Automation	Standard Resolver	BR1	→	BR-R1A1
	Heidenhain	BR2	→	BR-H1A2
Baldor	Standard Resolver	BD2		N/A
	Standard Incremental Encoder	BD3		N/A
Baumueller	Standard Resolver	N/A		BM-R1A1
	Stegmann (SKM036)	N/A		BM-S1A1
	Heidenhain	N/A		BM-H1A2
Beckhoff	Heidenhain	BE	→	BE-H1A2
Copley Controls	Standard Incremental Encoder	CO1		N/A
	Standard Resolver	CO2		N/A
Control Techniques/Nidec	Stegmann (SRM050)	CT1		N/A
	Stegmann (SKM036)	CT3	→	CT-S1B1
	Standard Incremental Encoder	CT4	→	CT-E1B2
	Standard Resolver	CT5	→	CT-R2B1
	Encoder	CT7		N/A
	Heidenhain	CT9	→	CT-H1B2
Elau/Schneider	Stegmann (SRM050)	EU1		N/A
	Stegmann (SKM036)	EU4	→	EU-S1A1
Elmo Motion Control	Standard Resolver	EL1	→	EL-R1B1
	Standard Incremental Encoder	EL2	→	EL-E1B2
	Heidenhain	EL3	→	EL-H1B2
Emerson/Control Techniques	Standard Incremental Encoder	EM2		N/A
	Encoder	EM5		N/A
Exlar	Incremental Encoder	EX1	→	EX-E1A2
	Standard Resolver	EX4	→	EX-R1A1
	Standard Resolver w/KTY84	EX5		N/A
	Heidenhain	EX6	→	EX-H1A2
	Incremental Encoder	EX7		N/A
	Stegmann	EX8	→	EX-S1A2
Infranor	Standard Resolver	N/A		IF-R1B2
	Stegmann (SKM036)	N/A		IF-S1B2
Indramat/Bosch-Rexroth	Standard Resolver	IN6		N/A
	Stegmann	IN7	→	IN-S2D3
	Heidenhain	IN8	→	IN-H1D3
Kollmorgen/Danaher	Heidenhain	KM4		N/A
	Standard Resolver	KM5	→	KM-R2A1
	Standard Incremental Encoder	KM6	→	KM-E1A2

Feedback Options Continued

LTI	Standard Resolver	N/A		LS-R2A1
	Stegmann (SKM036)	N/A		LS-S1A2
Lenze	Stegmann	LZ1		N/A
	Standard Resolver	LZ5	→	LZ-R1B2
	Standard Incremental Encoder	LZ6	→	LZ-E1B2
Parker	Standard Incremental Encoder	PC6		N/A
	Standard Resolver	PC7	→	PC-R1B1
	Standard Incremental Encoder	PC8	→	PC-E1B2
	Stegmann	PC9		N/A
	Standard Resolver	PC0		N/A
Rockwell Automation	Stegmann (SKM036)	RA1	→	RA-S1C2
	Stegmann (SRM050)	RA2		N/A
	Standard Incremental Encoder	RA3	→	RA-E1C2
	Standard Resolver	RA4		N/A
	Stegmann Absolute Encoder DSL	N/A	→	RA-S3C0
Schneider Electric	Stegmann	SC2		N/A
Siemens	Standard Resolver	SM2	→	SM-R1B1
	Endat Heidenhain (EQN 1325)	SM3		N/A
	Heidenhain (EQN 1125)	SM4	→	SM-H1B2
	Siemens Heidenhain (EQN 1325)	SM9		N/A
Stober Drives	Heidenhain	SB5	→	SB-H1A1
	Standard Resolver	SB6	→	SB-R2A1
SEW/Eurodrive	Standard Resolver	SW1		N/A
	Standard Incremental Encoder	SW2		N/A
	Stegmann	SW3		N/A
Yaskawa	Yaskawa Sigma V abs. encoder	YS5		N/A

Mounting Options		
GSX		GTX
K (Metric Double Side Mount)	→	Metric Side Mounts (base integrated)
F (Front Flange Inch)		1 (Front Flange Metric)
C (Rear Clevis Inch)		5 (Rear Clevis)
S, D (Inch Side Mount)		3 (Tapped Face)
		F (Front Flange Inch)
		C (Rear Clevis Inch)

***CURTISS -
WRIGHT***

EXLAR®

www.Exlar.com

Exlar® is a brand of Curtiss-Wright