

**RESISTANCE SPOT WELDING**

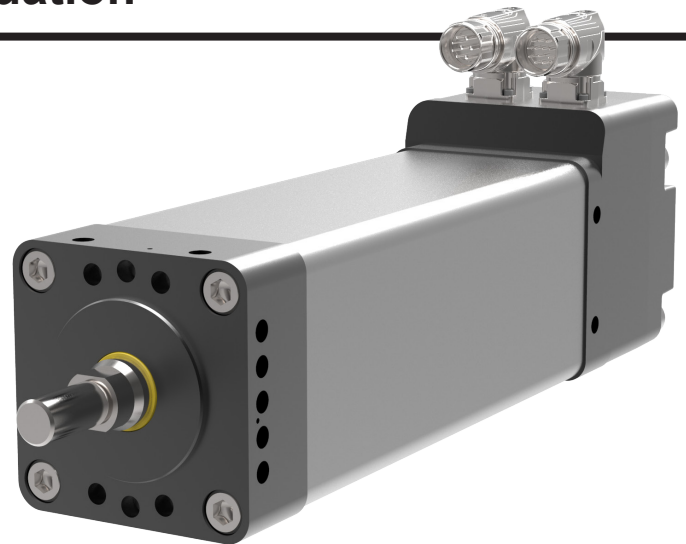
Courtesy of Comau

## GTW Latest in Weld-Gun Actuation

The GTW is the latest in weld-gun actuation from Exlar. Built from the foundation of the GS actuator series which revolutionized electromechanical actuation in automotive welding, Exlar has serviced the industry since 2006 with over 25,000 units sold into auto-weld applications.

The GTW Series offers flexible solutions coupled with low maintenance features and proven life reliability. The GTW weld-gun actuator mirrors the exceptional performance of Curtiss-Wright's Exlar GTX product platform and incorporates designs to serve leading global manufacturers in the automotive industry. The GTW motor | actuator can integrate with ABB, Comau, Fanuc, and KUKA robot controllers as well as Bosch Rexroth and Festo 7th axis drive controllers.

**Yaskawa, Nachi, and Kawasaki interfaces coming soon!**



## Who We Are

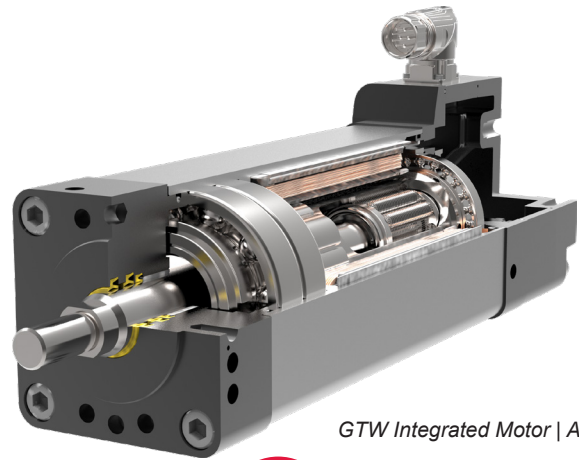
Exlar® manufactures electromechanical linear roller screw actuators, rotary servomotors, and integrated control solutions for a broad range of applications. Our unique technology provides an efficient electric replacement for hydraulic or pneumatic cylinders and a more robust replacement for ball screws. With forces up to 80,000 pounds and speeds up to 60 inches per second, we are able to deliver higher force and speed in smaller

packages than other comparably sized actuation technology. Exlar actuators have more flexibility, higher efficiency, and lower maintenance than traditional hydraulic and pneumatic solutions. Whether looking to increase productivity or reduce your total cost of ownership, Exlar's team of highly skilled engineers can put together the right solution for you.

Exlar® is a brand of the Curtiss-Wright Actuation Division.

## BENEFITS

- Over 30 million welds under typical weld profiles
- Built-in mounting features for adaption to a variety of weld-gun configurations, including C-Gun, X-Gun, and Pinch systems
- The GTW actuator is “lubed for life” and requires no downtime for maintenance when used in a typical welding environment\*
- Two frame sizes available to fit almost any need
- Modular design allows for ease of bolt-on in-field customization
- Connectorization to match amplifier specification, including interfacing with leading automotive industrial robots enabling quick and easy hookup
- Feedback device and alignment to match amplifier manufacturer specifications including KUKA, ABB, Comau, and Fanuc robot controllers as well as Bosch Rexroth and Festo 7th axis drive controllers



GTW Integrated Motor | Actuator



**Lubed for Life™**  
Inverted Roller Screw Design

\*Assumes 30 million weld cycles when operated within published performance ratings and recommended full stroke re-lubrication cycles.

## Maximize Life | Minimize Maintenance

Unlike traditional roller screws and ball screws that disperse lubricants during operation, the unique inverted roller screw design keeps lubrication where it is needed the most, increasing the life of the actuator and avoiding the downtime needed for periodic re-greasing. The premium seal and wiper design further increases the life of the GTW Series actuator by preventing contaminants from entering the screw system.

## SPECIFICATIONS

Product Basics					
Model	Frame Size mm (in)	Nominal Stroke mm (in)	Peak Force N (lbf)	Continuous Force N (lbf)	Max Speed mm/sec (in/sec)
GTW080	80 (3.15)	150-300 (6-12)	AC - 16,730 (3,762)	8,365 (1,881)	1270 (50)
GTW100	100 (3.94)	150-300 (6-12)	AC - 30,784 (6,920)	15,395 (3,460)	953 (37.5)

IP Rating: IP66S

Contact manufacturer for additional features and options

